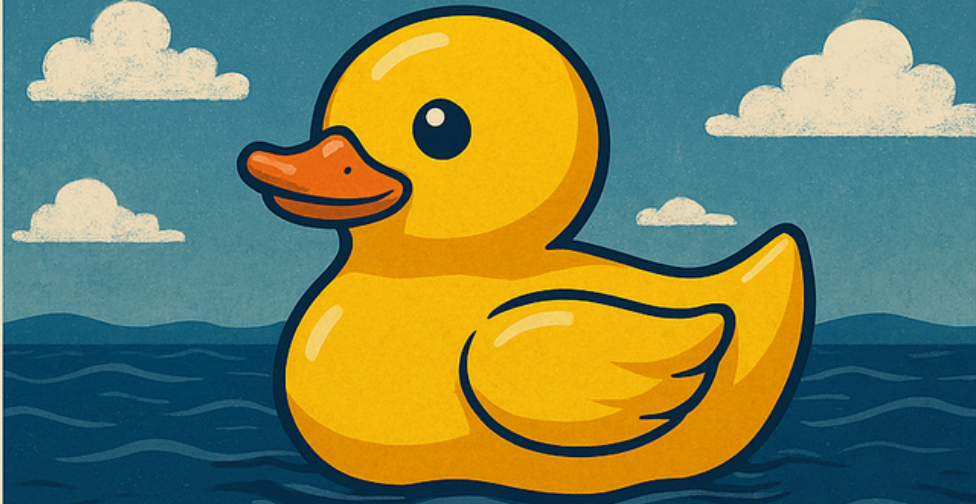


# RUBBER DUCKS, OCEANS AND RIDICULOUS HYPOTHETICALS



**7.00-8.00pm**

**Tuesday**

**30th June**

**Stahl Theatre**

**Oundle**

## **Rubber Ducks, Oceans & Ridiculous Hypotheticals!**

**With Vanessa Madu**

**Tickets: £2.50**

In 1992, 29,000 rubber ducks spilt into the North Pacific Ocean, and oceanographers couldn't have been more delighted!

In this talk, we'll discover how those ducks became data, why your brain is already a mathematical modelling machine, and how the same equation you'll use to race a jar of molasses down a ramp is related to the mathematics that helped scientists respond to one of the worst environmental disasters in history.



**Suitable for ages 10-70!**

Ticket price subsidised by the  
**OPEN** Learning Partnership

[stahltheatre.savoyssystems.co.uk](http://stahltheatre.savoyssystems.co.uk)